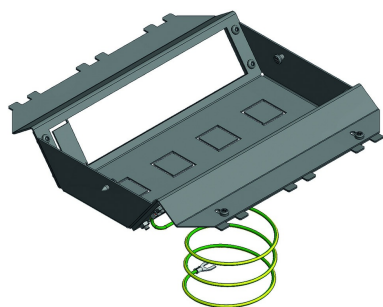


TSB

Triple apparatus cup



For compact floor installations. Ideal for lower installation depths from 100mm. For lower installation depths use TSBL3.

Standard finish		Pre-galvanised				kg/stk	Stock	Unit	
HD	Reference	↕ mm	↔ mm	↔ ↔ mm	↔↔ mm				
-	TSB3					0,688	5	X	STK

- Tested according EN 50085-2-2.
 For oblique mounting of clip devices 45.
- Standard 8 mounting positions.
 - After removing the rectangular plate, max. 9 mounting positions.
 - After removing 4 plates (push and turn away), Attema network port adapters can be mounted in the bottom.
 - Fasten by tightening 2 pre-assembled screws with Pozi2 screwdriver.
 - Earthing wire is included and can be connected to NEO floor box.